

深圳市亿金电子有限公司

TEL:0755-27876565 <http://www.yijindz.com> QQ:857950243

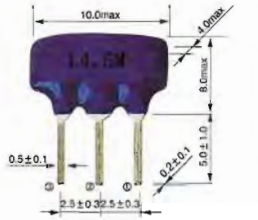
LTS□MEB (宽带型) 电视机/录像机用陶瓷滤波器
LTS□MEB Series of Ceramic Filter For TV/VCR Stage (Wide Band-width Type)

2.3-4.5MHz

技术特性 TECHNICAL CHARACTERISTICS

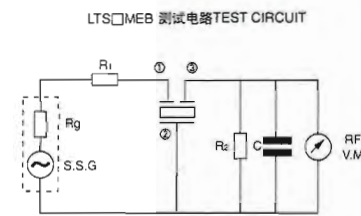
型号 Part Number	标称中心频率 Nominal Center Frequency(fn)(MHz)	3分贝带宽 3dB Band Width (kHz) min	20分贝带宽 20dB Band Width (kHz) max	插入损耗 Insertion Loss (dB) max	阻带衰减 Spurious Attenuation (0 - fn)(dB)min	输入/输出阻抗 Input/Output Impedance(Ω)
LTS2.3MEB	2.300	$fn \pm 70$	800	6.0	25	1000
LTS2.8MEB	2.800	$fn \pm 70$	800	6.0	25	1000
LTS3.2MEB	3.200	$fn \pm 70$	800	6.0	25	1000
LTS3.8MEB	3.800	$fn \pm 70$	800	6.0	25	1000
LTS4.5MEB	4.500	$fn \pm 125$	850	6.0	25	1000

外形与尺寸 FIGURE AND DIMENSIONS



- ① 输入 Input
- ② 接地 Ground
- ③ 输出 Output

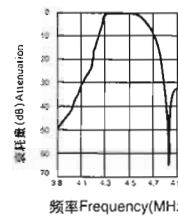
测试电路 TEST CIRCUIT



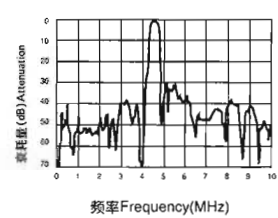
Rg+R1=R2=输入/输出阻抗
Rg+R1=R2=Input/Output Impedance C=10PF
(包括寄生电容和射频电压表的输入电容)
(Including stray capacitance and input capacitance of RF voltmeter)

特性曲线 CHARACTERISTICS

LTS4.5MEB频率特性
LTS4.5MEB frequency characteristics



LTS4.5MEB阻带衰减特性
LTS4.5MEB spurious Attenuation



LTS□MCB/MDB 系列电视机/录像机用陶瓷滤波器(低假响应型)
LTS□MCB/MDB Series of Ceramic Filter For TV/VCR Stage(Low-Spurious Type)

4.5-6.5MHz

技术特性 TECHNICAL CHARACTERISTICS

型号 Part Number	标称中心频率 Nominal Center Frequency(fn)(MHz)	3分贝带宽 3dB Band Width (kHz) min	20分贝带宽 20dB Band Width (kHz) max	插入损耗 Insertion Loss (dB) max	阻带衰减 Spurious Attenuation (0 - fn)(dB)min	输入/输出阻抗 Input/Output Impedance(Ω)
LTS4.5MCB	4.500	$fn \pm 60$	600	6.0	30	1000
LTS4.5MDB	4.500	$fn \pm 70$	750	6.0	30	1000
LTS5.5MCB	5.500	$fn \pm 60$	600	6.0	30	600
LTS5.5MDB	5.500	$fn \pm 80$	750	6.0	30	600
LTS6.0MCB	6.000	$fn \pm 60$	600	6.0	30	470
LTS6.0MDB	6.000	$fn \pm 80$	750	6.0	30	470
LTS6.5MCB	6.500	$fn \pm 70$	650	6.0	30	470
LTS6.5MDB	6.500	$fn \pm 80$	800	6.0	30	470

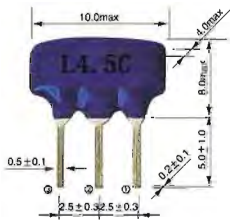
深圳市亿金电子有限公司

TEL: 0755-27876565 <http://www.yijindz.com> QQ:857950243

LTS□MCB/MDB 系列电视机/录像机用陶瓷滤波器(低假响应型)
LTS□MCB/MDB Series of Ceramic Filter For TV/VCR Stage(Low-Spurious Type)

4.5-6.5MHz

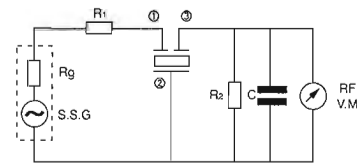
外形与尺寸 FIGURE AND DIMENSIONS



- ①输入 Input
- ②接地 Ground
- ③输出 Output

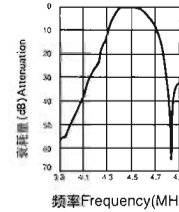
测试电路 TEST CIRCUIT

LTS□MCB/MDB 测试电路TEST CIRCUIT

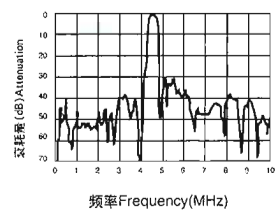


$Rg+R1=R2$ =输入/输出阻抗
 $Rg+R1=R2$ =Input/Output Impedance $C=10PF$
(包括寄生电容和射频电压表的输入电容)
(Including stray capacitance and input capacitance of RF voltmeter)

特性曲线 CHARACTERISTICS



LTS4.5MCB频率特性
LTS4.5MCB Frequency Characteristics



LTS4.5MCB阻带衰减特性
LTS4.5MCB Spurious Attenuation

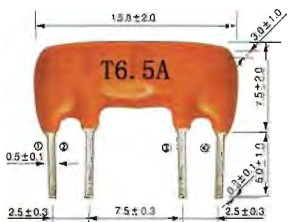
LTT□MA 系列电视机/录像机用陶瓷滤波器(高选择型)
LTT□MA Series of Ceramic Filter For TV/VCR Stage(High-Selectivity Type)

4.5-6.74MHz

技术特性 TECHNICAL CHARACTERISTICS

型号 Part Number	标称中心频率 Nominal Center Frequency(fn)(MHz)	3分贝带宽 3dB Band Width (kHz) min	20分贝带宽 20dB Band Width (kHz) max	插入损耗 Insertion Loss (dB) max	阻带衰减 Spurious Attenuation (dB) min	输入/输出阻抗 Input/Output Impedance(Ω)
LTT4.5MA	4.500	$fn \pm 40$	370	10.0	40(4.5 \pm 0.8MHz)	1000
LTT4.72MA	4.724	$fn \pm 40$	370	10.0	40(4.72 \pm 0.8MHz)	1000
LTT5.5MA	5.500	$fn \pm 50$	350	9.0	50(5.5 \pm 1MHz)	600
LTT5.74MA	5.742	$fn \pm 50$	350	9.0	50(5.74 \pm 1MHz)	600
LTT6.0MA	6.000	$fn \pm 50$	400	9.0	50(6.0 \pm 1MHz)	470
LTT6.25MA	6.250	$fn \pm 50$	400	9.0	50(6.25 \pm 1MHz)	470
LTT6.5MA	6.500	$fn \pm 50$	400	9.0	50(6.5 \pm 1MHz)	470
LTT6.74MA	6.742	$fn \pm 50$	400	9.0	50(6.74 \pm 1MHz)	470

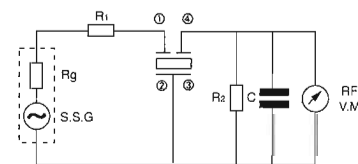
外形与尺寸 FIGURE AND DIMENSIONS



- ①输入 Input
- ②接地 Ground
- ③输出 Output

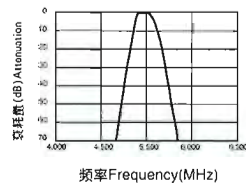
测试电路 TEST CIRCUIT

XT□MA 测试电路TEST CIRCUIT

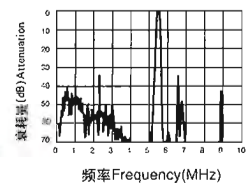


$Rg+R1=R2$ =输入/输出阻抗
 $Rg+R1=R2$ =Input/Output Impedance $C=10PF$
(包括寄生电容和射频电压表的输入电容)
(Including stray capacitance and input capacitance of RF voltmeter)

特性曲线 CHARACTERISTICS



LTT5.5MA频率特性
LTT5.5MA Frequency Characteristics



LTT5.5MA 阻带衰减特性
LTT5.5MA Spurious Attenuation